

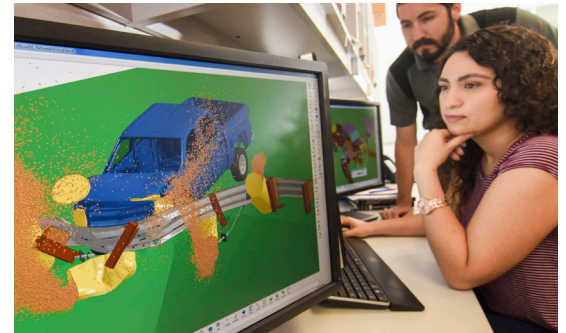
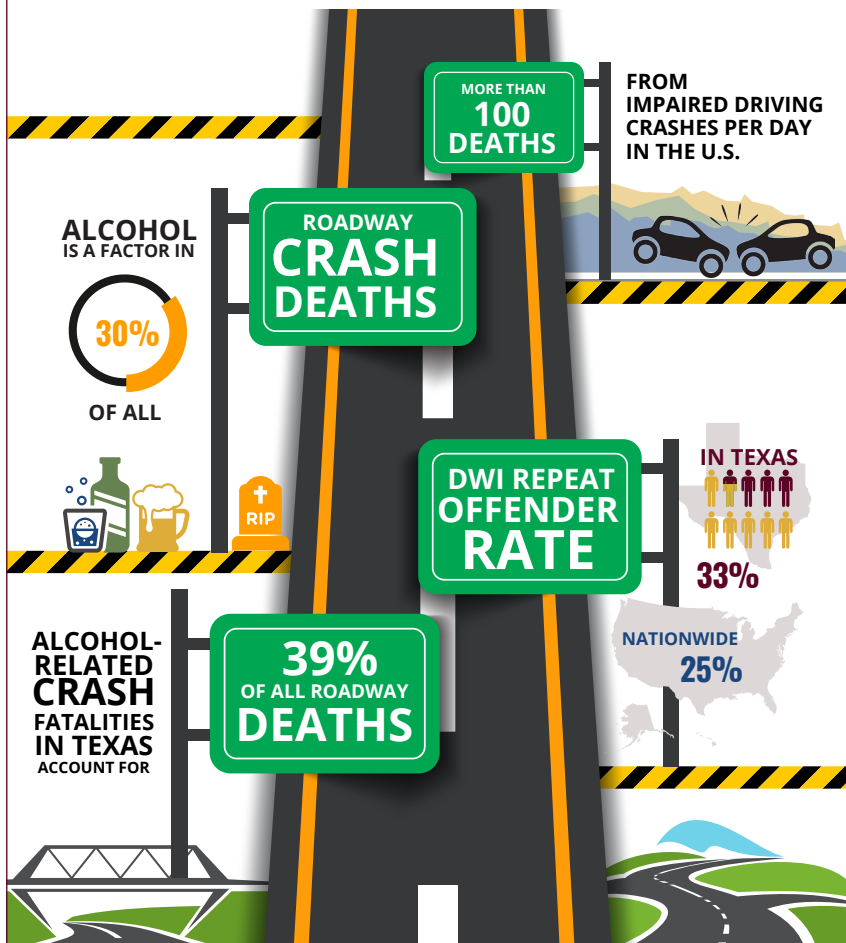


Alcohol and Drug Impacts

Despite public awareness efforts and stricter traffic laws, thousands of Americans die each year in crashes that involve impaired drivers. Researchers in TTI's Center for Alcohol and Drug Education Studies are working to better understand the roadway safety implications of drug and alcohol use and impart that knowledge to the public policy and judicial communities along with other stakeholder groups.

WHAT WE KNOW

Grasping the severity of driver impairment



WHAT WE DO

Channeling multi disciplinary expertise

Our staff bring forth a unique combination of experience and understanding in alcohol/drug traffic safety impacts, law enforcement and judicial procedure, and crash analysis and reconstruction.

We are skilled in the research disciplines of problem investigation, training, and curriculum and instructional design, and well versed in the physiological effects of blood-alcohol concentration and cannabis use.

We work to better comprehend the connections involving traffic safety, public health and criminal justice to save lives and enhance community health.

WHAT WE DELIVER

Gathering insight to enhance systems



Essential Education: Marijuana and Driving

Our staff designed and delivered educational initiatives to increase public awareness of how marijuana use affects driving. This project aimed to meet a call from the National Highway Traffic Safety Administration to increase public education about marijuana and was highlighted as a high priority for the Texas Department of Transportation.



Street Coaching for Pedestrians and Cyclists: Putting Laws into Practice on University Campuses

This project sought to change behaviors related to pedestrian and bicycle safety by engaging students, staff and law enforcement on a large university campus regarding existing pedestrian and bicycle laws. Researchers conducted field and/or electronic interviews with pedestrians/bike road users to identify how safety can be improved. Field observations assessed pedestrian/bike crash risk factors, and researchers addressed data limitations that curtail the advancement of safety practices that eliminate pedestrian/bike crash deaths and injuries. Deliverables include recommendations for improving safety through enforcement of safety laws.



Training and Assistance for Criminal Justice Professionals on DWI Treatment Interventions

We are designing and delivering training to increase awareness of impaired driving and its complications. This project will also provide direct technical assistance to probation departments, the primary provider of interventions and referring bodies of DWI defendants in the state.



Texas Impaired Driving Task Force

We oversee coordination of the Texas Impaired Driving Task Force, the Texas Impaired Driving Plan, and the Texas Impaired Driving Forum, and provide other technical assistance. The task force brings together stakeholders from a diverse set of backgrounds to address the impaired driving challenge from multiple perspectives, including education, outreach, enforcement, prosecution, judicial, health, probation, treatment and research. The collaboration of key stakeholders from state and local levels allows the task force to assess statewide issues and close loopholes in enforcement, legislation and prosecution procedures.



Ignition Interlock Device Training, Outreach and Evaluation

We are providing trainings and educational materials to criminal justice and traffic safety professionals to increase use of ignition interlocks in Texas.



Blood-Alcohol Concentration Reporting in Texas: Improving Medical Examiner Office and County Performance

This effort sought to increase the number of known blood-alcohol concentration toxicology test results so that traffic safety professionals, governing agencies and those within the criminal justice system will better understand the impaired driving problem in Texas. The reported data would provide a more accurate depiction of the issue so stakeholders will be better able to adjust their reporting procedures and ultimately aid in improving toxicology reporting.

FOR MORE INFORMATION



Center for
Transportation Safety

Troy Walden

t-walden@tti.tamu.edu
979-317-2526

<https://cts.tti.tamu.edu>