

When a passenger vehicle
hits a heavy truck, chance
of death or serious injury is

4x higher

when compared to
rear-end crashes that don't
involve a heavy truck.

**PAY
ATTENTION**

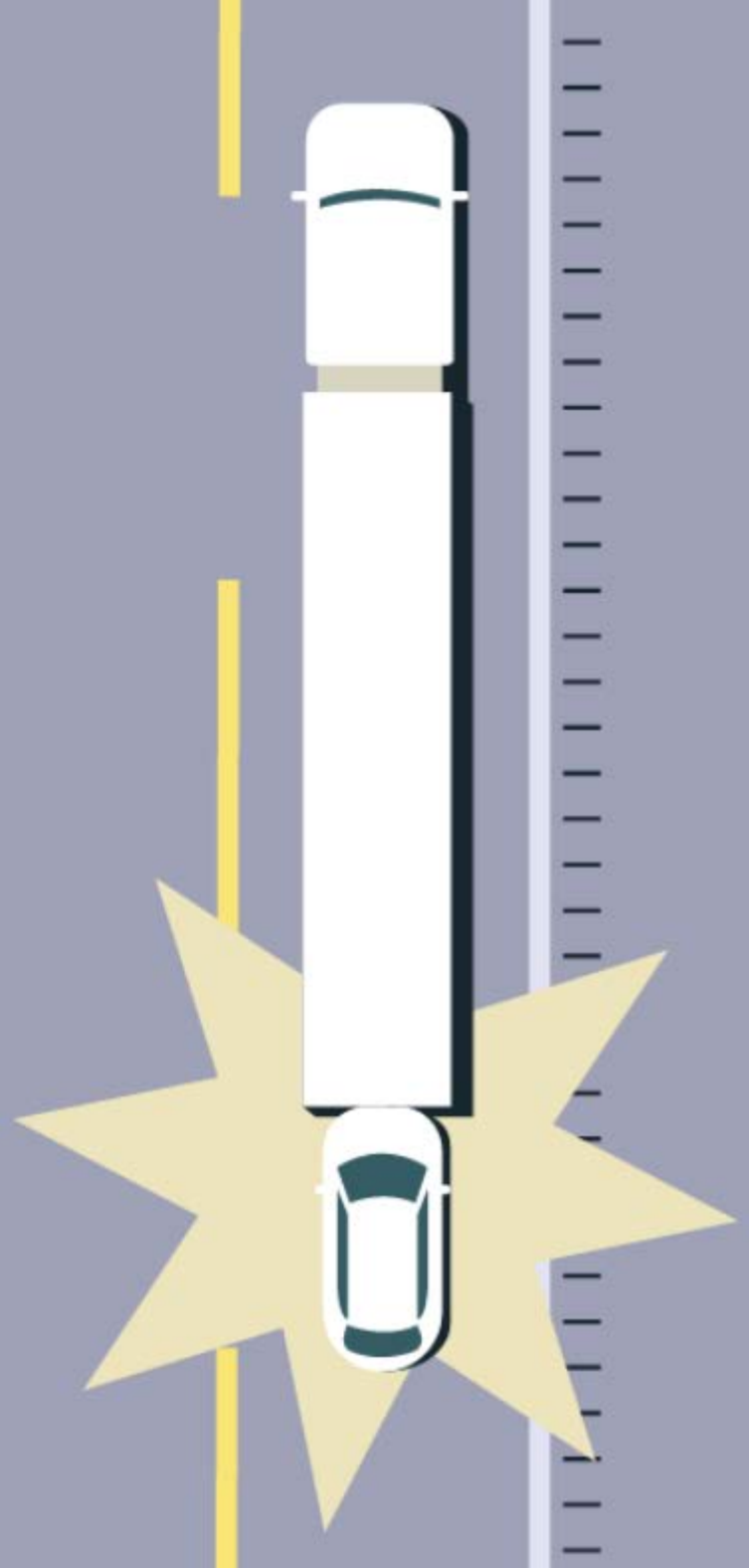
**LEAVE
SPACE**



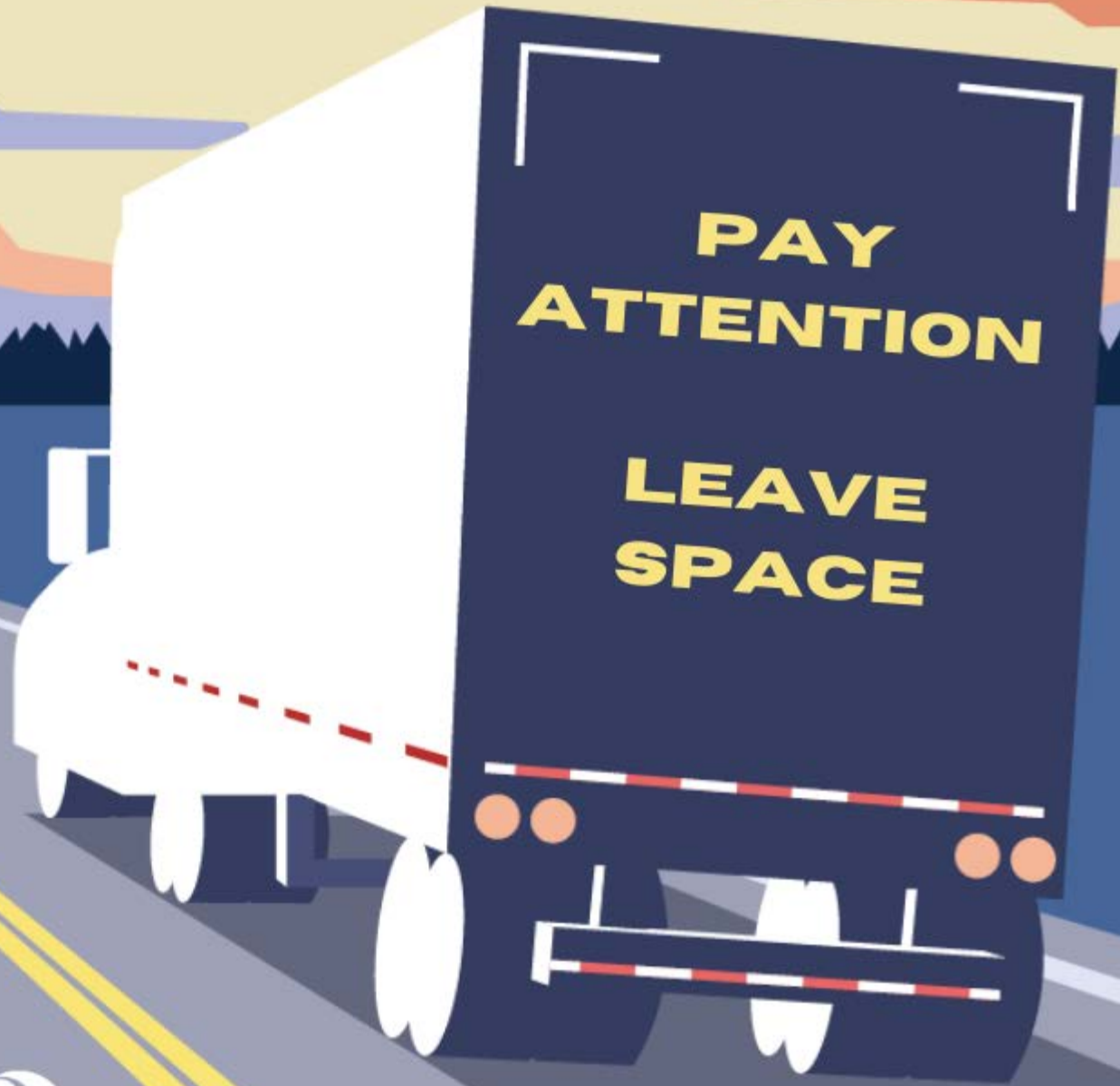
Center for
Transportation Safety



FMCSA



While rear-end crashes involving large trucks most often occur on freeways, crashes that occur on **multi-lane undivided & two-lane roadways** more frequently result in death or serious injury.



Center for
Transportation Safety



FMCSA

**Over 10%
of two-vehicle
rear-end crashes
involving a large
truck occur in
work zones.**

**ROAD
WORK
AHEAD**

**PAY ATTENTION
LEAVE SPACE**



Make yourself more visible!

When approaching a queue, temporarily flash your hazard lights to signal that traffic is slowing or stopping.

Make yourself more visible!

**Outline the back of
your truck or trailer
and your underride
guard with 4 inch
red and white
reflectorized tape**

