

# How Close is Close Enough?

## REPORTING CRASH LOCATION COORDINATES

**Latitude and longitude coordinates are crucial pieces of a crash report.** The Texas Department of Transportation (TxDOT) assigns coordinates to all crashes using a process that snaps the crash to the center line in the road but officers can also report the exact coordinates.



Use the Map app on your phone or Google Maps on the computer to accurately and precisely obtain the coordinates of the first harmful event to ensure that your reports are complete and fully capture where the crash occurred.

**1** Open the Map app or website



**2** Zoom in on the location where the first harmful event occurred



**3** A box will pop up on your screen with the coordinates of that location



*A study of a sample of 2020 fatal crashes found that less than half of the crash reports had officer assigned coordinates.*

The **DISTANCE BETWEEN** officer reported and TxDOT assigned coordinates ranged from **2 FEET TO 9.7 MILES**.

Only **25% OF COORDINATES REPORTED** by officers and assigned by TxDOT were **WITHIN 50 FEET OF EACH OTHER**.

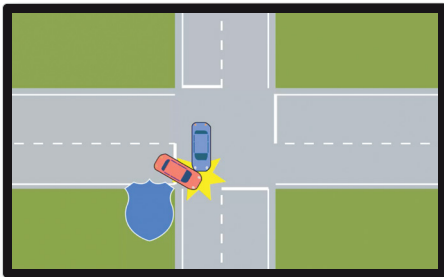


# REPORTING CRASH LOCATION COORDINATES

Report GPS coordinates as close as reasonably feasible to the first harmful event ...

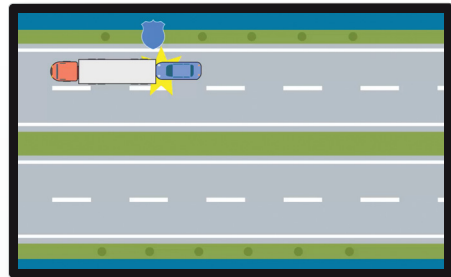


**BUT IF THAT IS NOT POSSIBLE...**



## Intersection-Related:

Record coordinates from the quadrant where the crash occurred



## Not Intersection-Related:

Record coordinates from side of the road and the general vicinity of the crash

CTS2247\_9248.SEP22

Request additional copies or ask project questions by contacting:  
Emily Martin at [e-martin@tti.tamu.edu](mailto:e-martin@tti.tamu.edu)