

When Life Is at the Crossroads...

As a senior driver, maintaining your mobility is important. Driving to the grocery store or a doctor's appointment are no longer things to take for granted. They're not just necessary trips – they're strategies for survival.

Intersections present unique dangers for all road users. But did you know senior drivers are more likely to crash at intersections compared to younger drivers? And these days, people are choosing more ways to travel than ever: biking, walking, skating, scooting, cycling, driving ... and they all come together at the crossroads.

Staying safe doesn't have to mean staying home. When multiple roads and multiple modes meet at intersections, senior drivers are particularly vulnerable. Being patient, staying aware, and following directions from signs and signals can help you maintain your independence – and keep you safe.

For more information, visit
cts.tti.tamu.edu/seniordrivers



Driving for Life



Safety Strategies
for Senior Drivers

Unprotected Left Turns

Just the Facts!

Which car looks closer to you?

Should you make a left turn?

9 out of 10 senior driver crashes involve more than one vehicle! (i.e., are "multi-vehicle crashes")

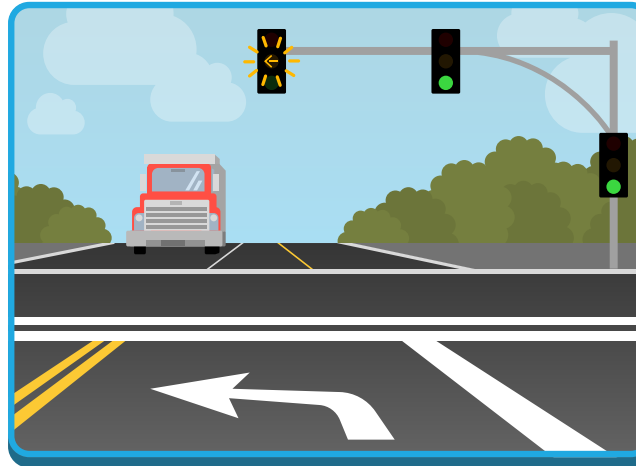
56% of senior driver multi-vehicle crashes occur on roadways with speed limits between 35 and 45 mph.

In multi-vehicle crashes that occur at intersections, "failure to yield the right of way while turning left," is the top contributing factor for senior drivers. This means that senior drivers turned left in front of or into a vehicle that was lawfully approaching from the opposite direction, causing a crash!

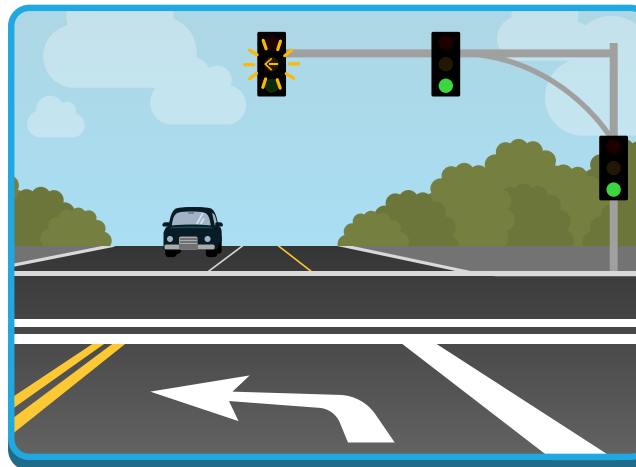
Multi-vehicle crashes are typically related to one vehicle failing to yield the right of way while turning left. A senior driver is more likely to have a crash

- at locations controlled by traffic signal lights and marked lanes
- when the other vehicle is smaller
- when the other vehicle is of a darker color, such as silver, blue, gray, or black.

The large red truck

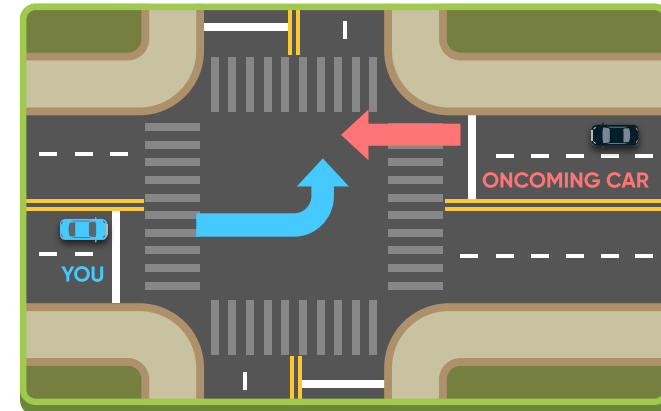
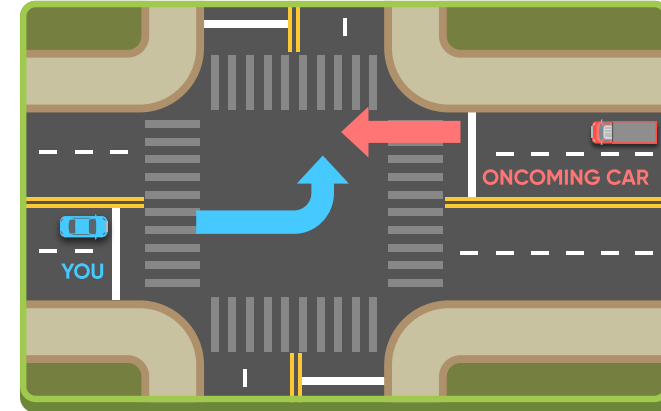


The black passenger car



An unprotected left turn is a relatively complicated situation! It requires considering multiples pieces of information:

- Is there an oncoming car?
- How fast is it approaching?
- Do you have enough time to safely complete the turn?



Although both cars are located at the same distance, the black passenger car appears to be farther away than the large truck.

Be patient, wait for a safe gap to make a left turn, and always stay aware!