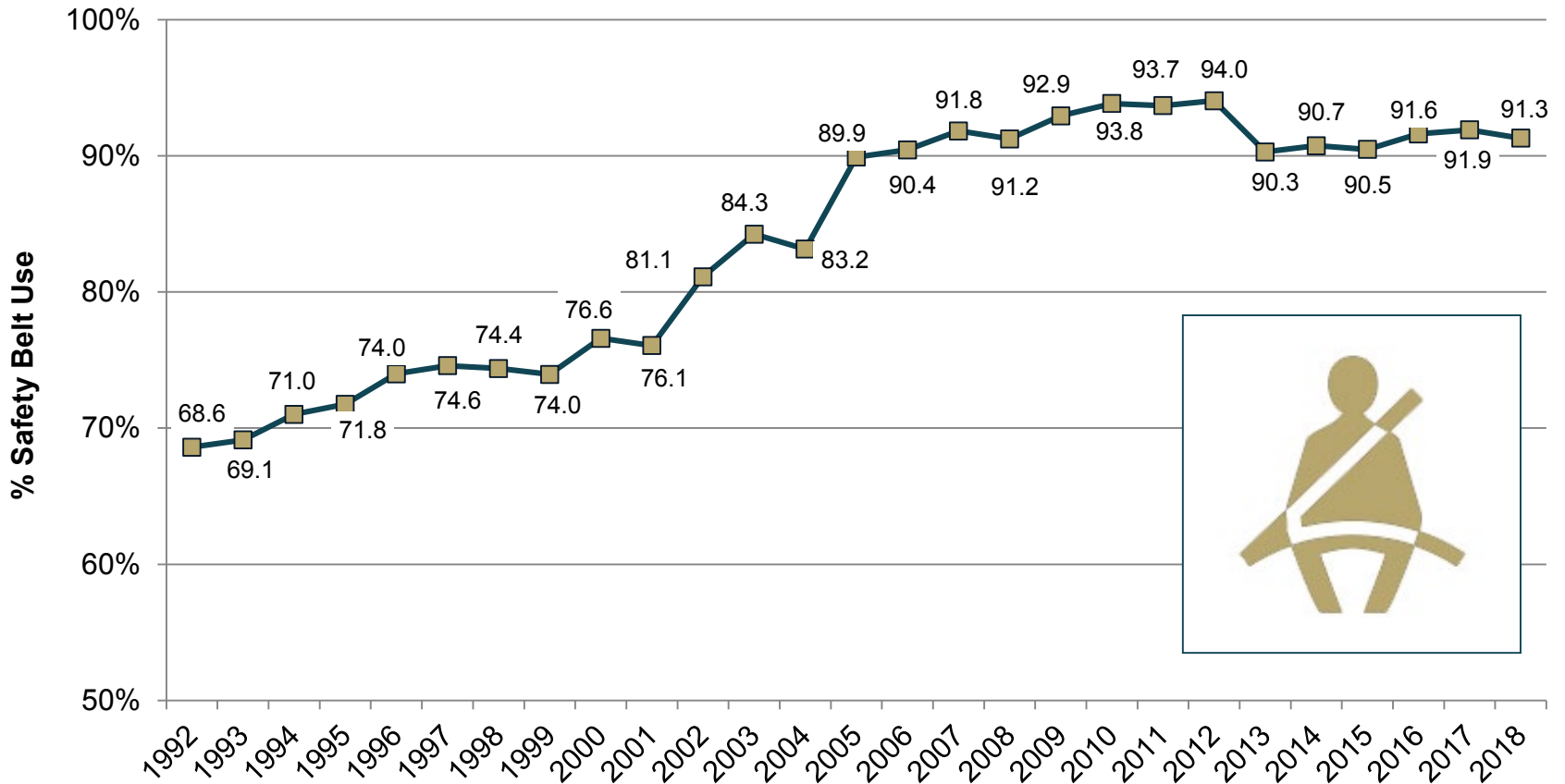


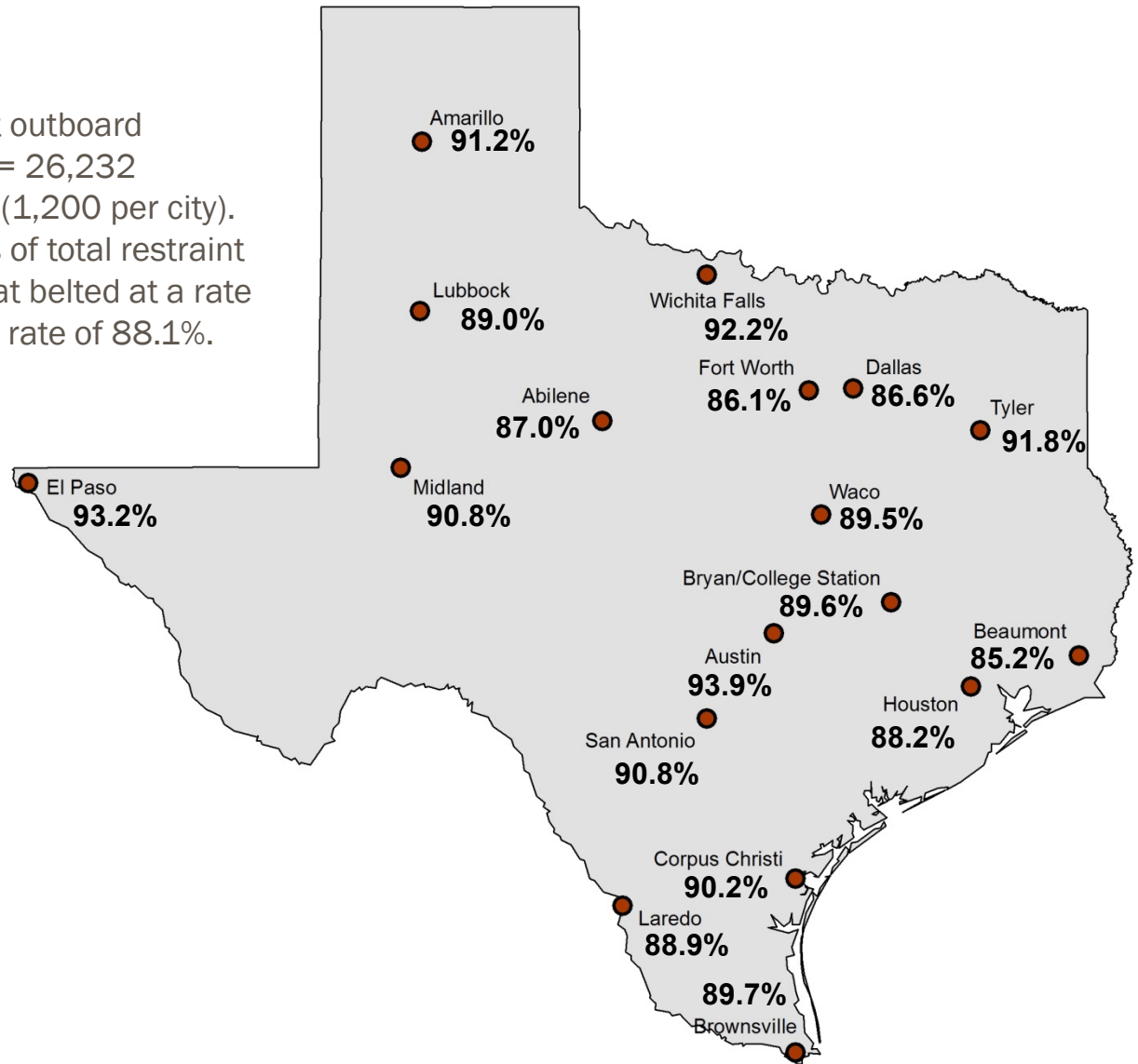
Statewide 2018 Safety Belt Use Rates



For more information, contact Katie Womack, kwomack@tamu.edu.

Texas 2018 Safety Belt Use by City

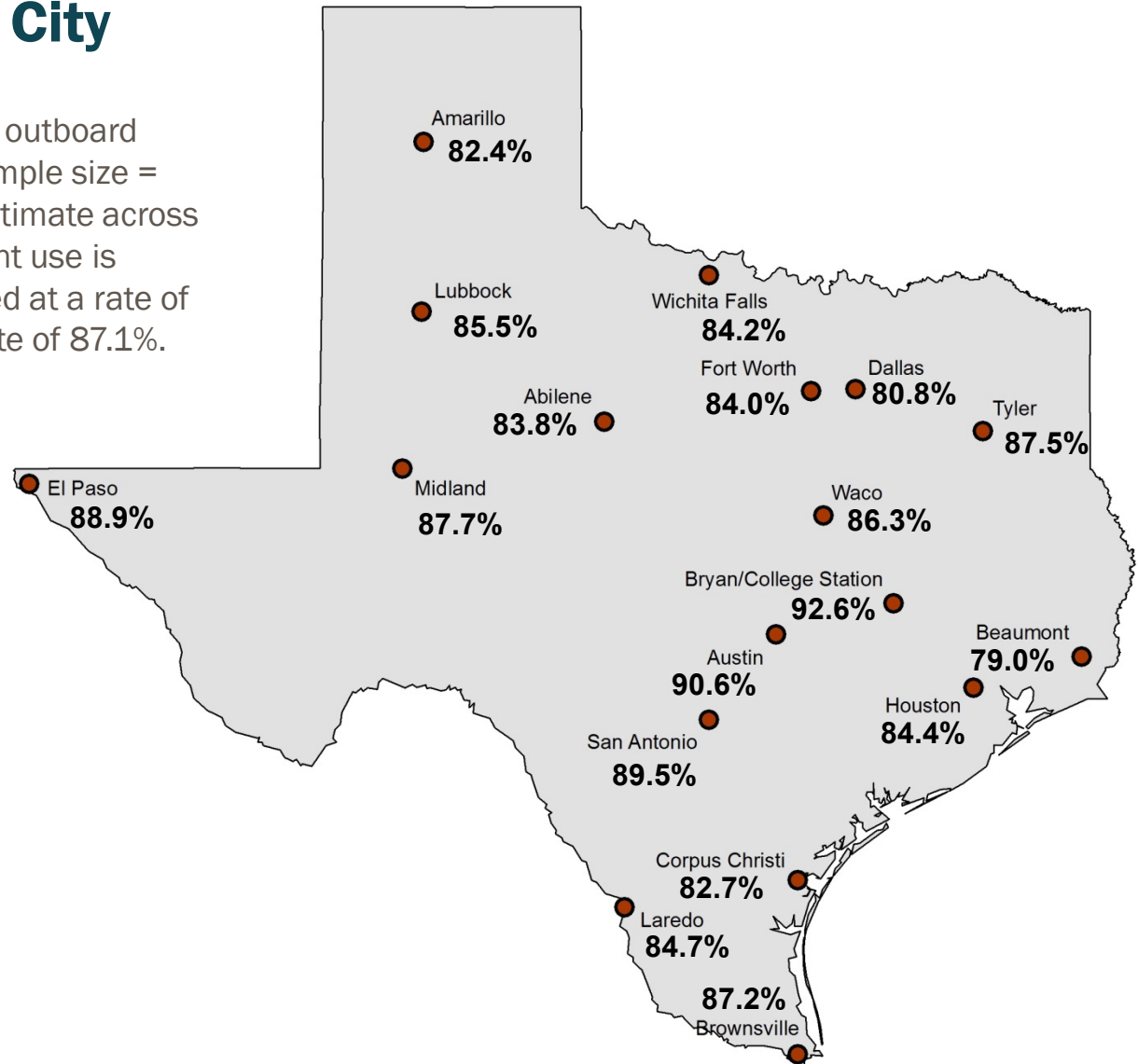
Use is for driver and front seat outboard passenger. Total sample size = 26,232 occupants in 21,600 vehicles (1,200 per city). Average estimate across cities of total restraint use is 89.7%. Drivers were seat belted at a rate of 90.0% and passengers at a rate of 88.1%.



For more information, contact Katie Womack, kwomack@tamu.edu.

Texas 2018 Nighttime Safety Belt Use by City

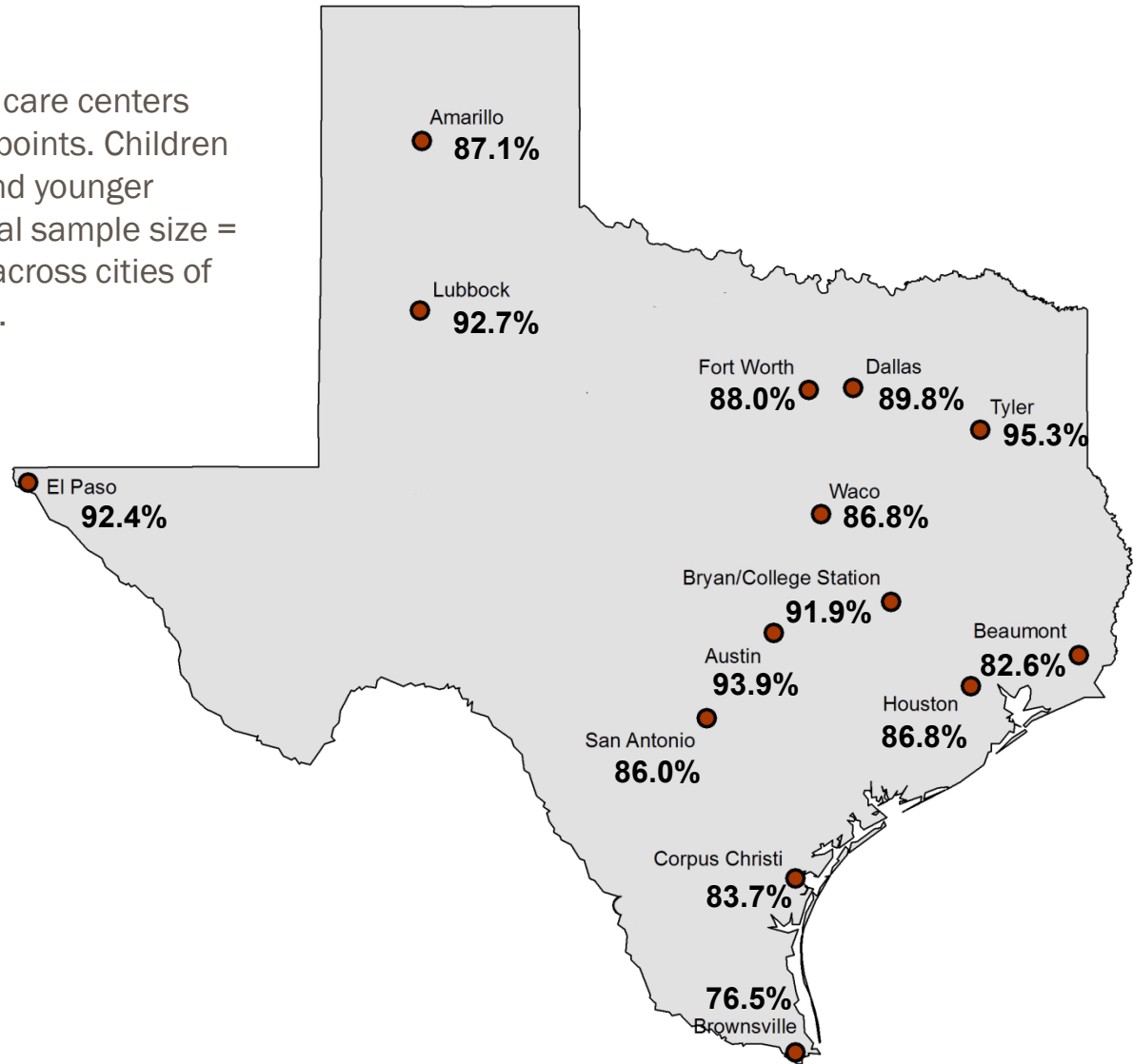
Use is for driver and front seat outboard passenger combined. Total sample size = 23,192 occupants. Average estimate across cities of total nighttime restraint use is 85.8%. Drivers were seat belted at a rate of 85.4% and passengers at a rate of 87.1%.



For more information, contact Katie Womack, kwomack@tamu.edu.

2018 Child Restraint Use in 14 Texas Cities

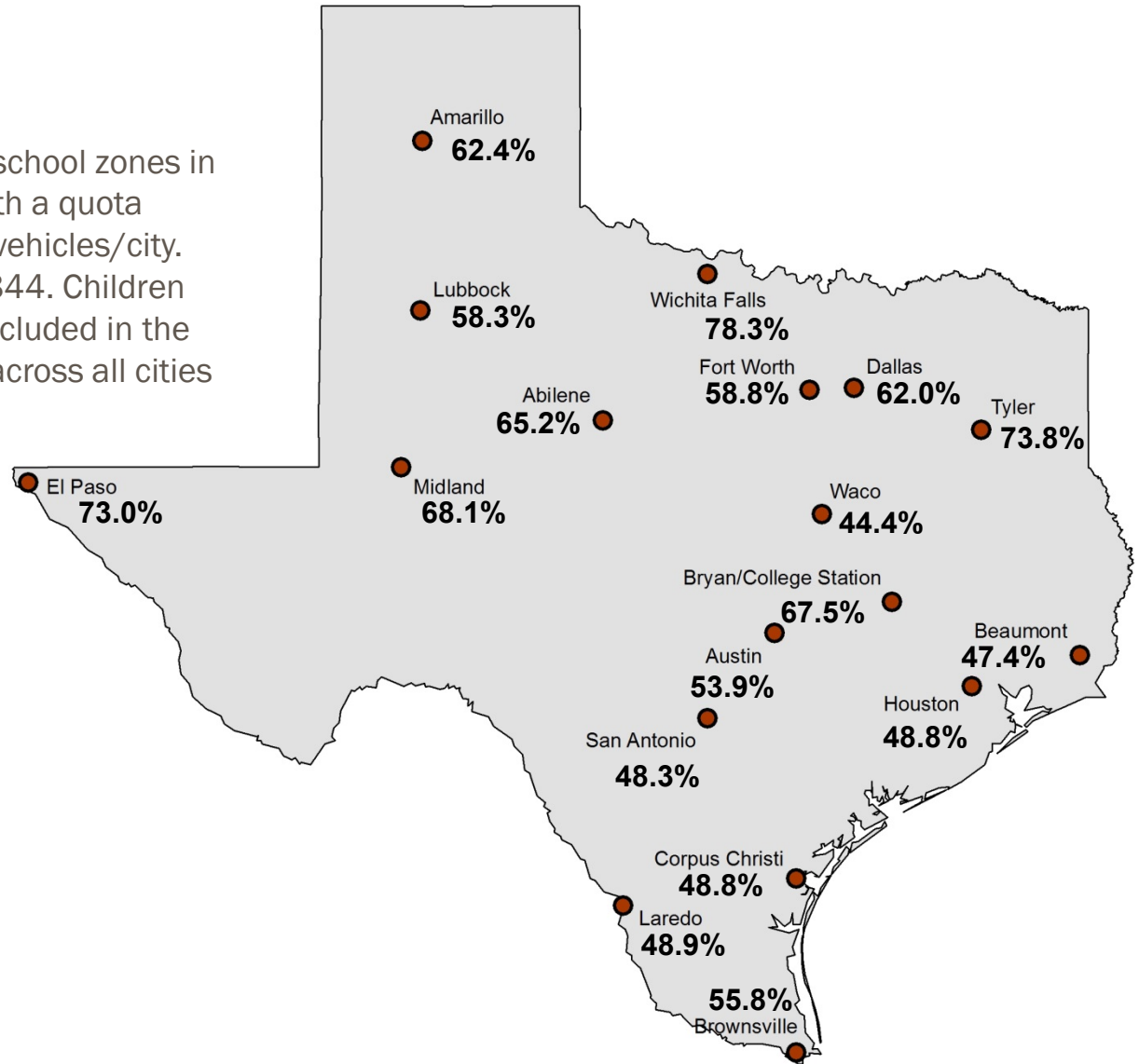
Surveys conducted at child care centers and shopping center entry points. Children estimated as 4 years old and younger included in the sample. Total sample size = 13,973. Average estimate across cities of total restraint use is 88.4%.



For more information, contact Katie Womack, kwomack@tamu.edu.

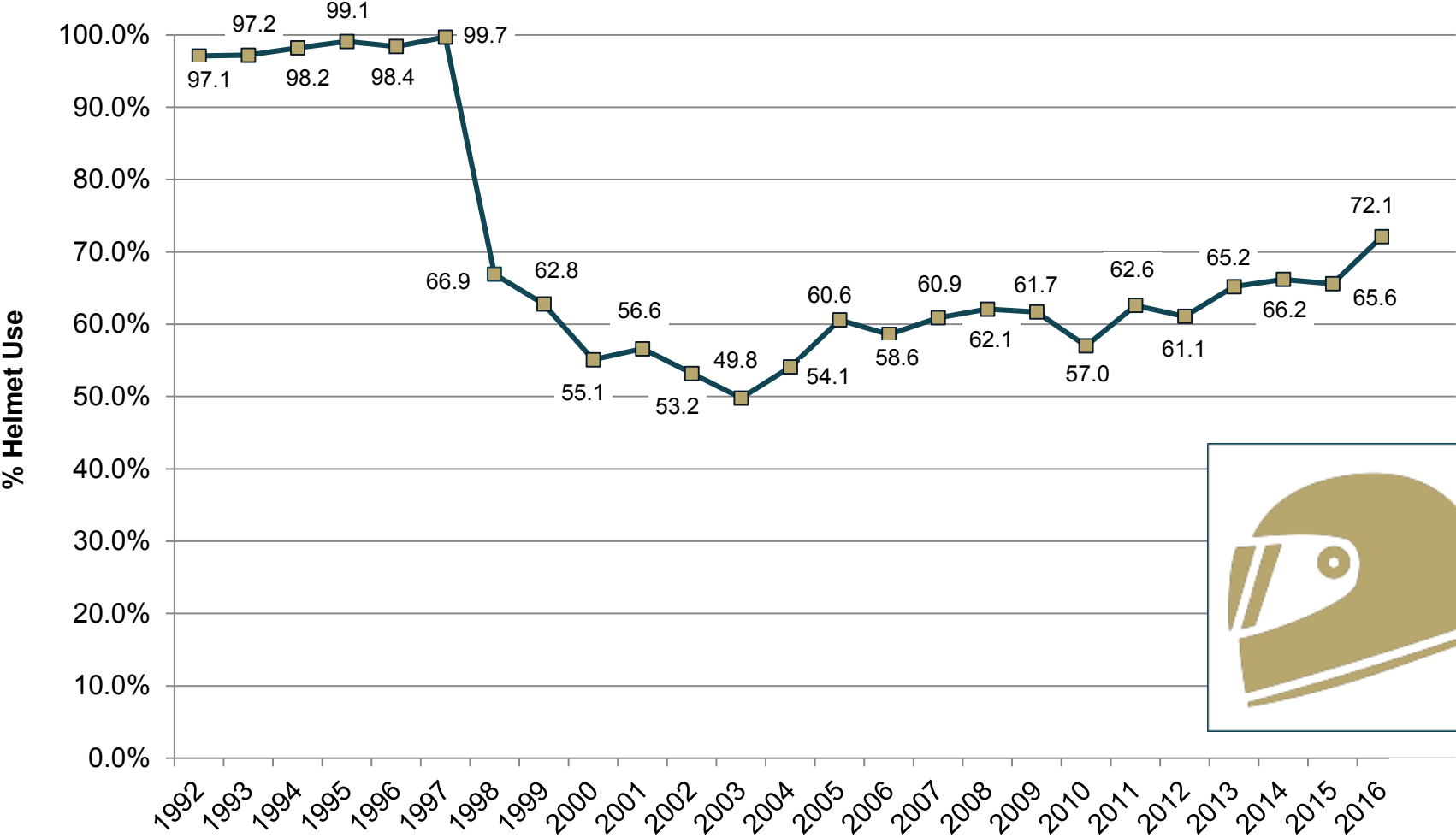
2018 School-Age Child Restraint Use in 18 Texas Cities

Surveys conducted in or near school zones in four quadrants in each city, with a quota sample of a minimum of 500 vehicles/city. Total 2018 sample size = 11,844. Children estimated as 5-16 years old included in the sample. Average percent use across all cities = 58.9%.



For more information, contact Katie Womack, kwomack@tamu.edu.

Statewide Motorcycle Helmet Use Rates



For more information, contact Katie Womack, kwomack@tamu.edu.