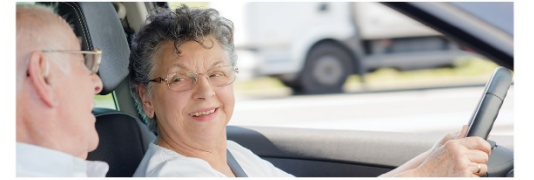
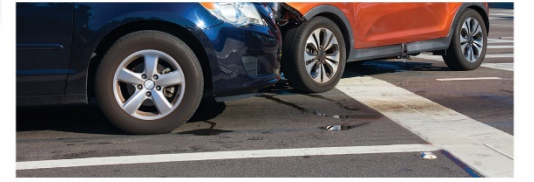


Pedestrian Safety



Texas
Strategic
Highway
Safety Plan



LEARN MORE:
www.texasshsp.com



Pedestrian Fatalities & Severe Injuries

2010-2015



FATALITIES

2,811
(14%)

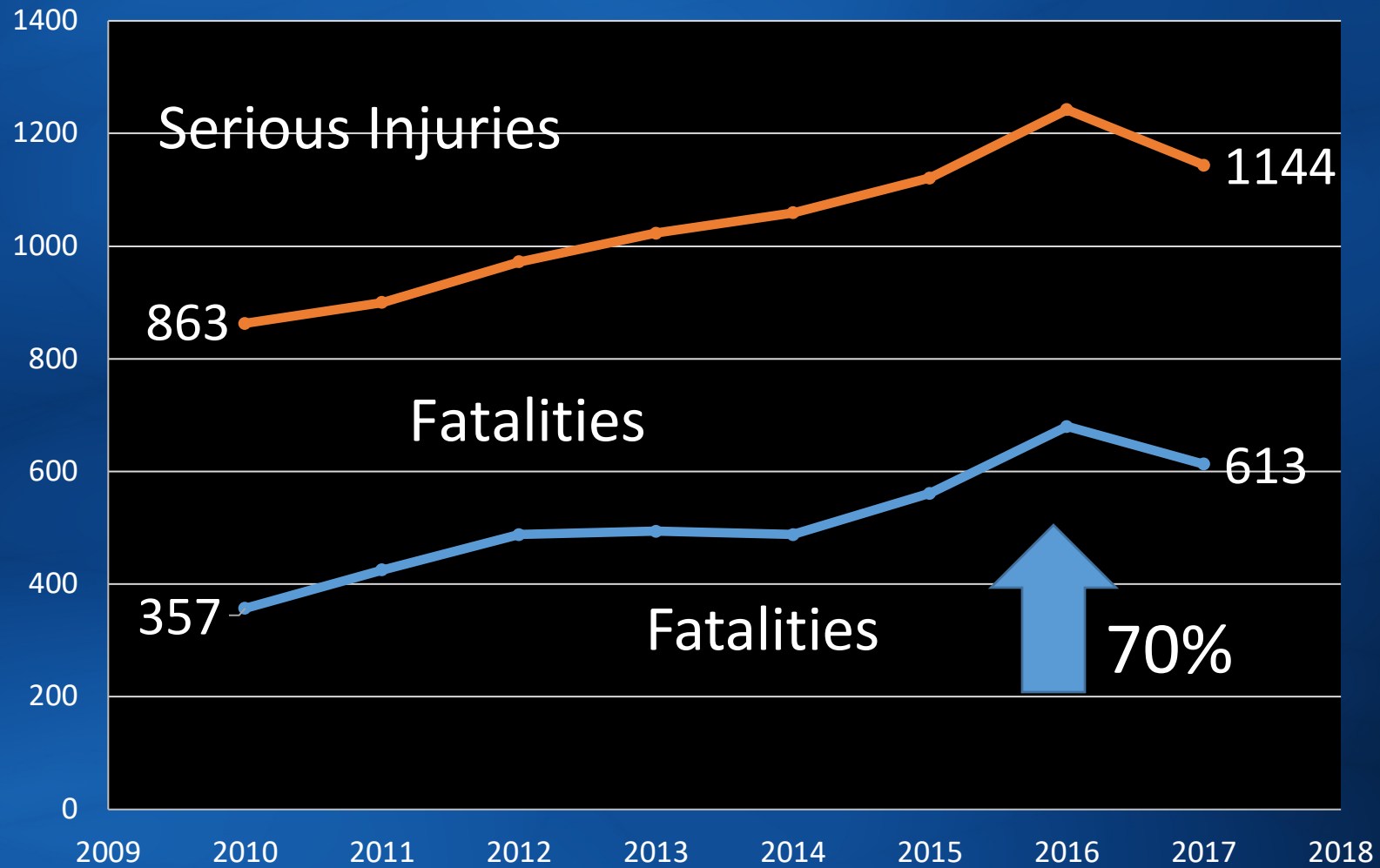


CASUALTIES

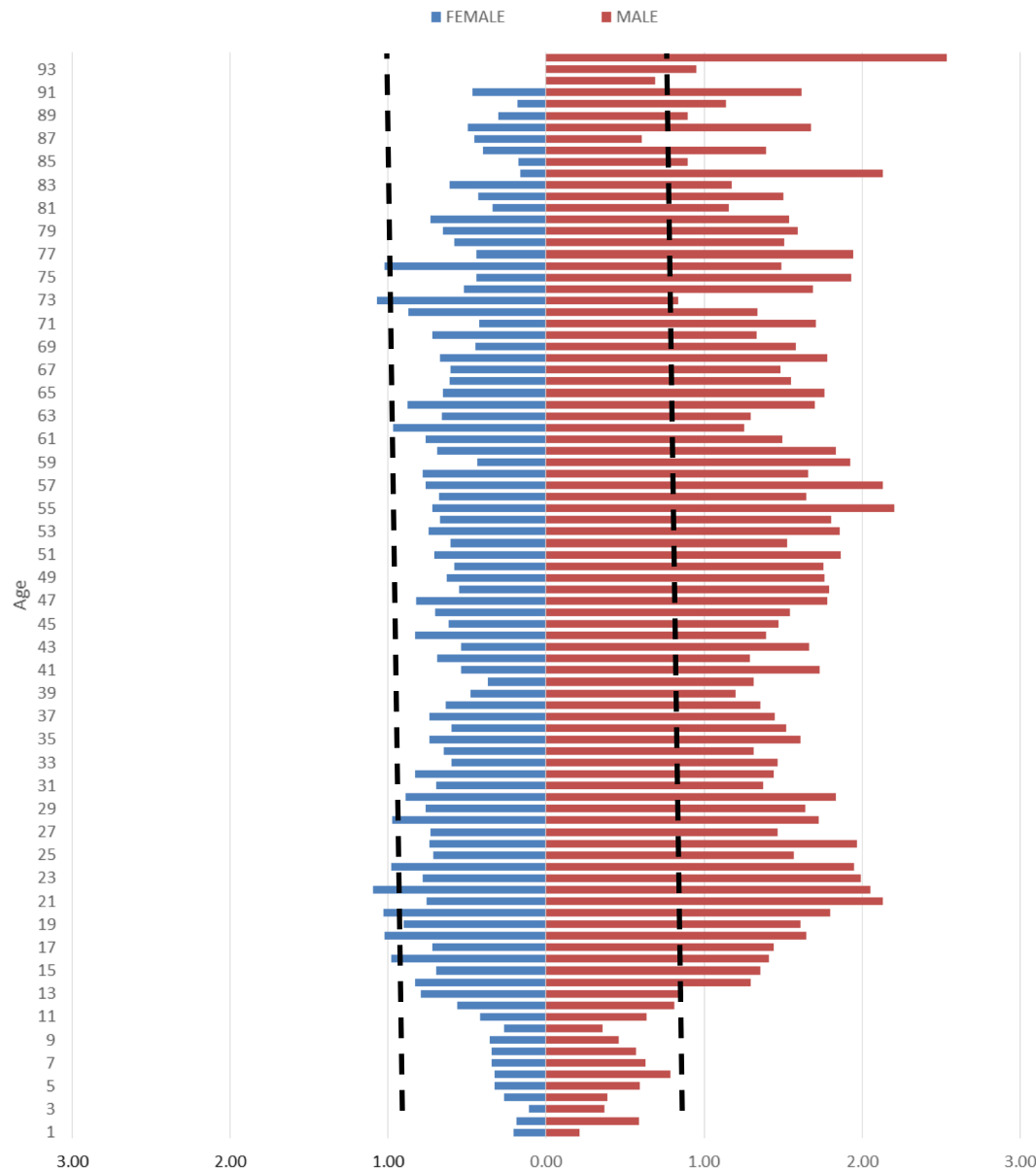
5,969
(6%)

URBAN: 78%

Pedestrian KA Trends



Proportion of K & A Pedestrian Crashes Relative to Proportion of Population by Age & Gender



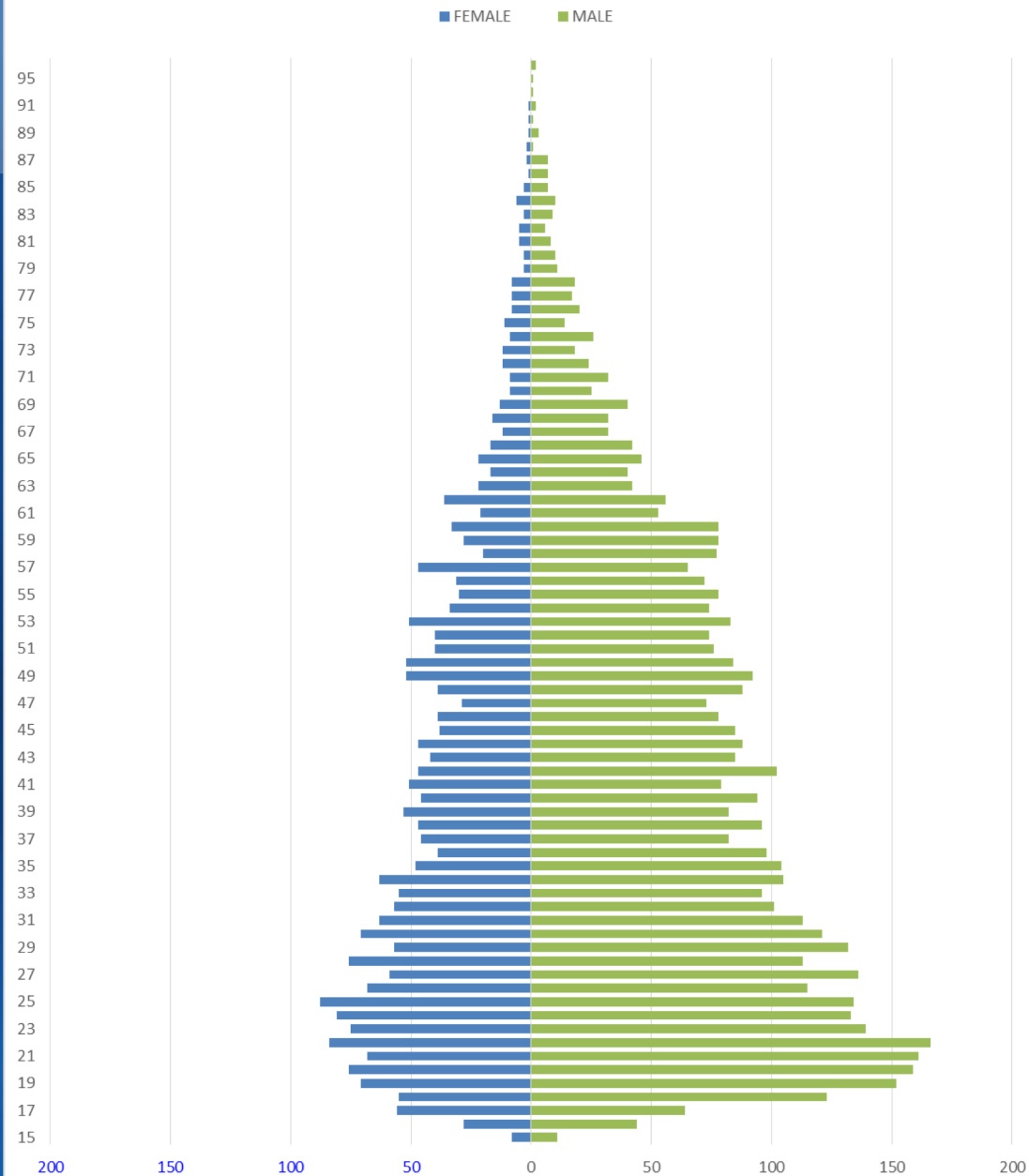
2010-2015

Accounting for population size,

- *Males*

*Values over 1.00 indicate age/gender group experienced an excess

Count of Drivers in K&A Pedestrian Crashes



2010-2015

Raw count of drivers involved in pedestrian crashes:

- *Males*
- *Young drivers*

Pedestrian Summary



Off-System 55%
98% Urban

On-System 45%
86% Urban

Nighttime: K – 79% A – 55%



Drivers:
Males: ≤ 60 years

Pedestrians:
Males > 16



Not at
Intersections

Urban: 65%
Rural: 82%

Impairment 24%



Drivers: 33%

Peds: 67%

Texas Strategic Highway Safety Plan



Texas Strategic Highway Safety Plan



Strategies

Countermeasures


Action Plans




1 Improve driver and pedestrian safety awareness and behavior.



5 Improve pedestrian-involved crash reporting.



2 Reduce pedestrian crashes on urban arterials and local roadways.




6 Establish vehicle operating speeds to decrease crash severity.



3 Improve pedestrian visibility at crossing locations.

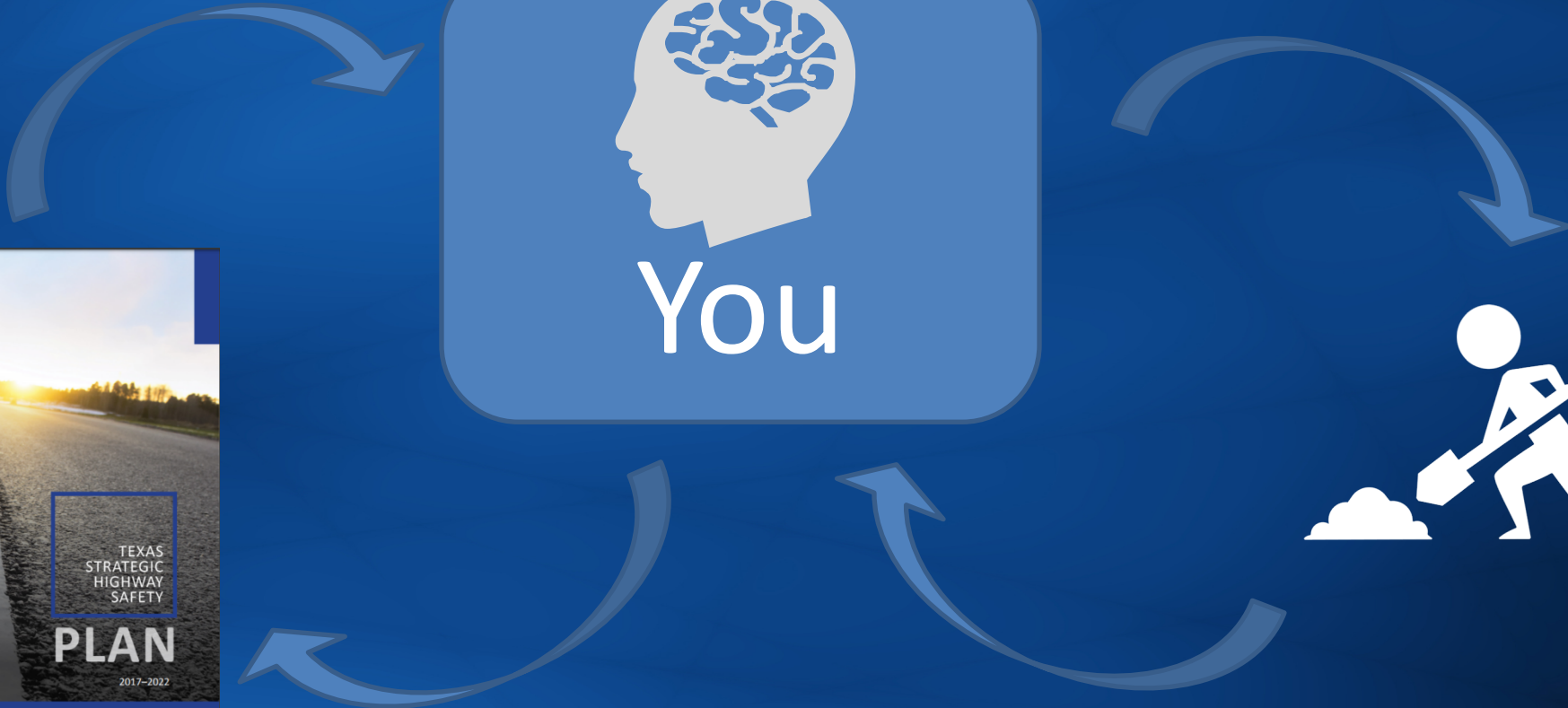
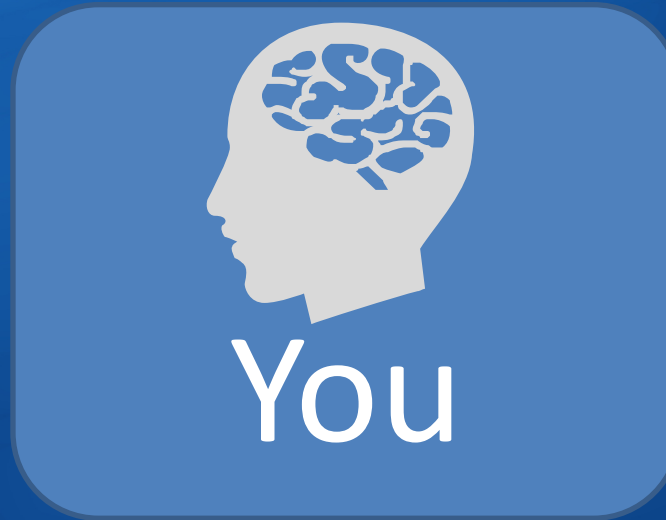


7 Develop strategic pedestrian safety plans tailored to local conditions.



4 Improve pedestrian networks.

Plan to Action:





Traffic Safety Conference
SAVE *the* **DATE**

Aug 8 - 10, 2018



**Sugar Land Marriott
Town Square**
16090 City Walk

Aug 8 - 10, 2018

Sponsored by TxDOT.

