

Alamo Area Metropolitan Planning Organization

Severe Pedestrian Injury Area Report



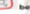
Inaugural Vision Zero Summit

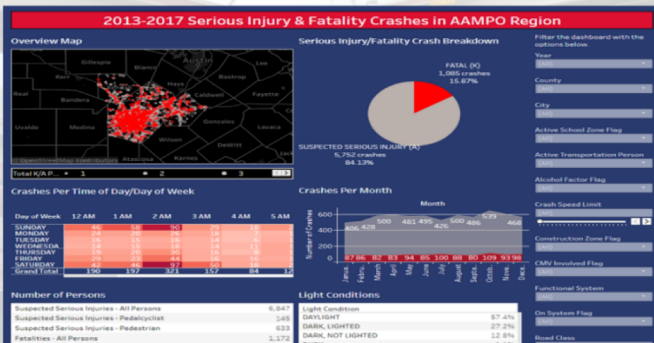


Crash Data Dashboard

Serious Injury Crash Overview

Work of roadway infrastructure, pedestrian and bicycle facilities as well as a number in traveling to their destinations throughout our communities is a priority. Efforts to reduce the frequency and severity of crashes and provide transportation resources and the Alamo Area MPO's Safety Program. The Fatality Rate on Texas roadways for 2016 was 1.44 (per 100 million vehicle miles traveled). This is a 3.57% increase from 2015. In comparison to the Alamo Area MPO's 2016 Fatality Rate of 1.37, this is lower than state average. Below is a dashboard showing fatalities and serious injury crashes for the MPO study area.

(For a better user experience, click this icon  below for full screen mode and this to go back to normal mode)



www.alamoarempo.org/crashstats

Walkable Community Workshops

